

INTRODUCING THE LATEST  
PROJECT BY AWARD  
WINNING DEVELOPER



intiland

✧ Accolades ✧





Exceptional  
private homes  
with access to  
the best of  
South Jakarta



# SOUTH GROVE

BY SERENIA HILLS







---

# ELEGANT HOMES, STRATEGICALLY LOCATED





A peaceful green enclave of luxury homes, strategically located close to the heart of South Jakarta's thriving business district.





CREATED BY TRUSTED  
DEVELOPER INTILAND,

A photograph of a middle-aged couple smiling and laughing in a garden. The man is on the left, wearing a light-colored shirt, and the woman is on the right, wearing a light-colored top. The background is a lush garden with trees and a stone wall. The entire image is overlaid with a semi-transparent red filter.

# A Beautiful Life

WITH LANDSCAPING BY  
INTERNATIONALLY RENOWNED  
BELT COLLINS AND

SHOW HOUSE INTERIORS  
BY HADIPRANA.

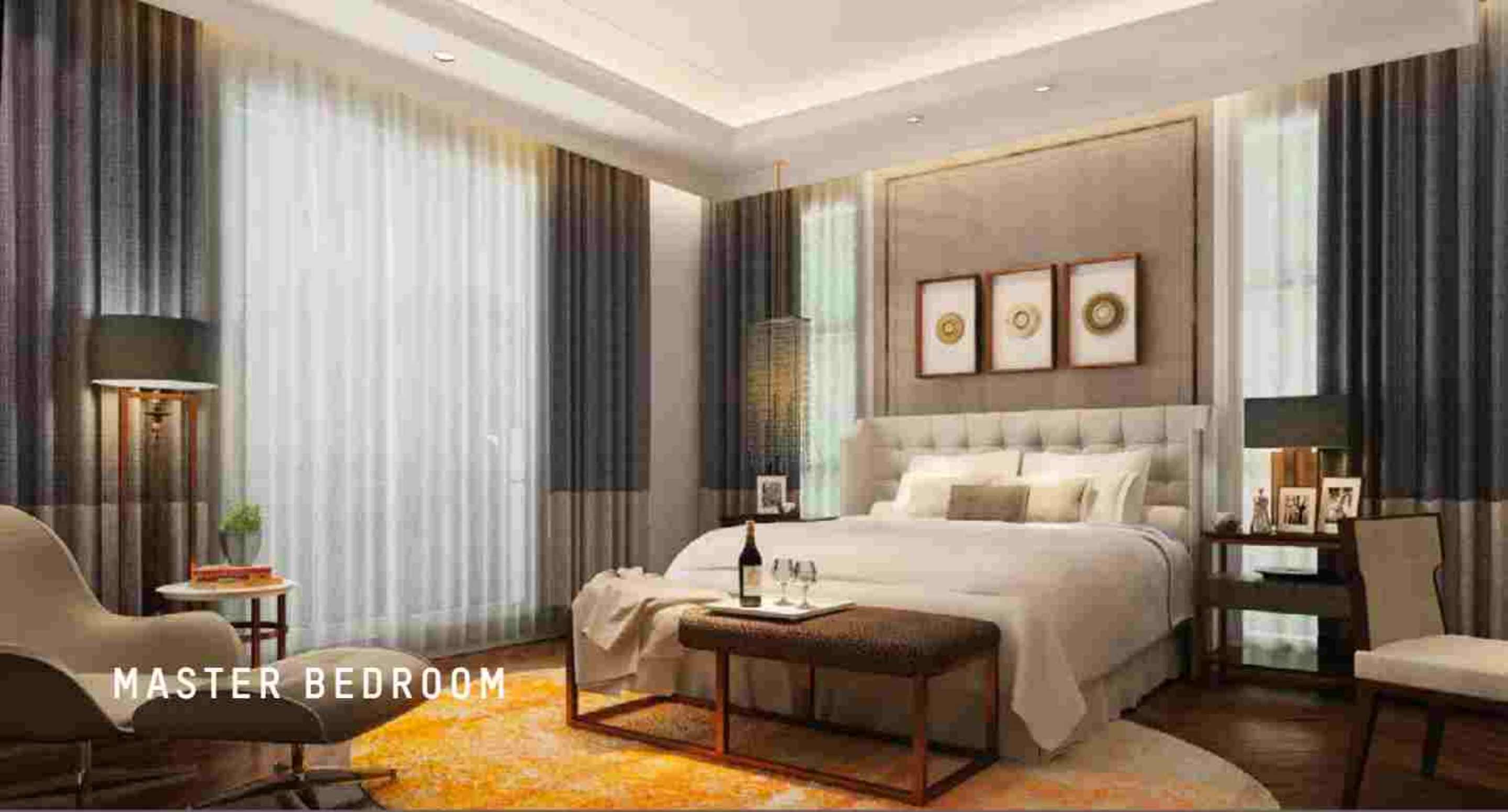




A Private Community,  
Closely Connected to  
Extensive Facilities







South Grove is positioned between two successful and iconic South Jakarta projects: South Quarter and Serenia Hills.

The residences are close to the TB Simatupang business hub, malls, international schools, hospitals, and the future **South Quarter MRT stop**, providing connectivity to the entire city.



Intiland is a trusted developer with a focus on quality of life. South Grove has direct access to Intiland's award-winning development at South Quarter, with its office towers and extensive retail and lifestyle facilities.

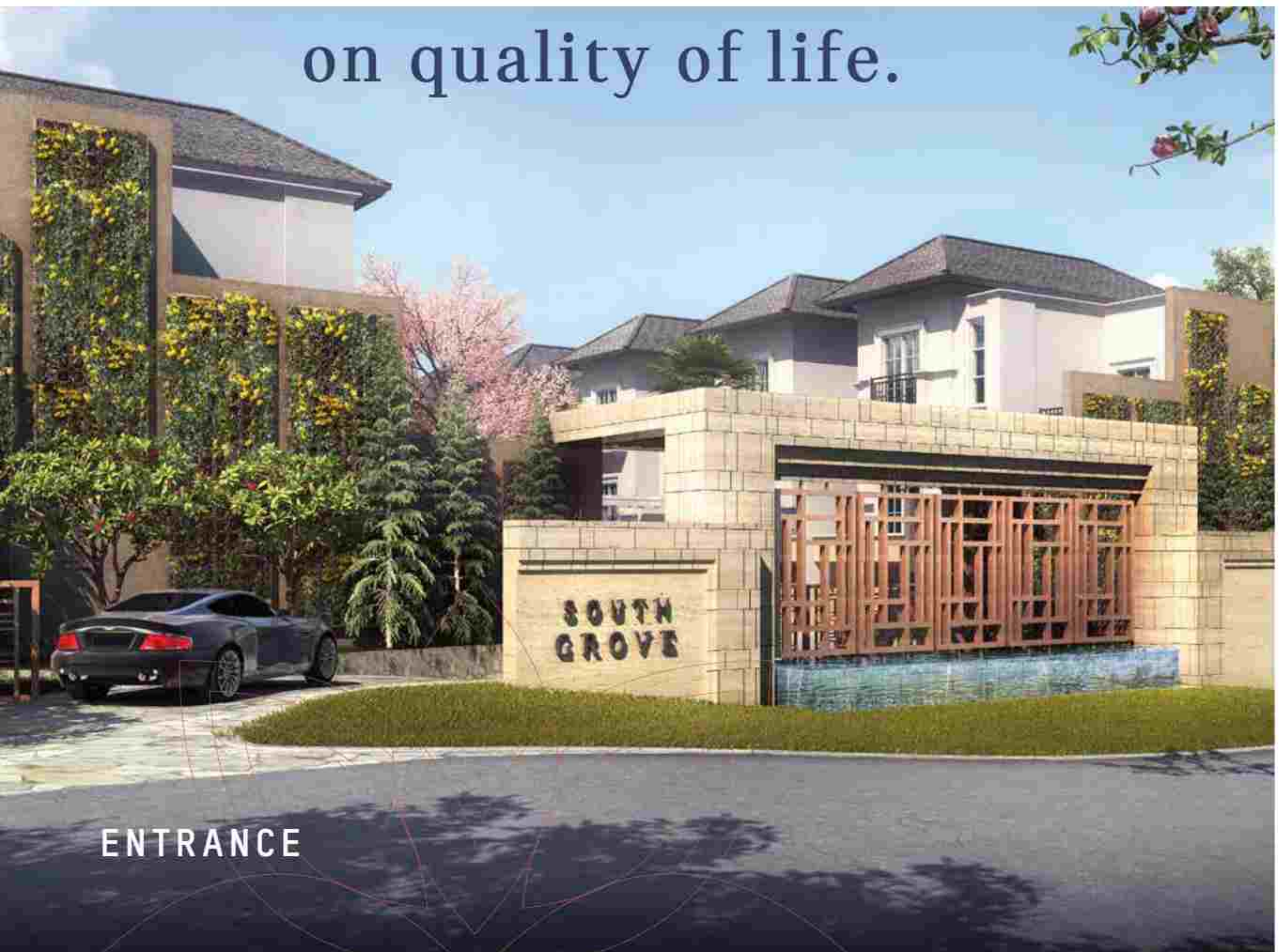


DINING ROOM

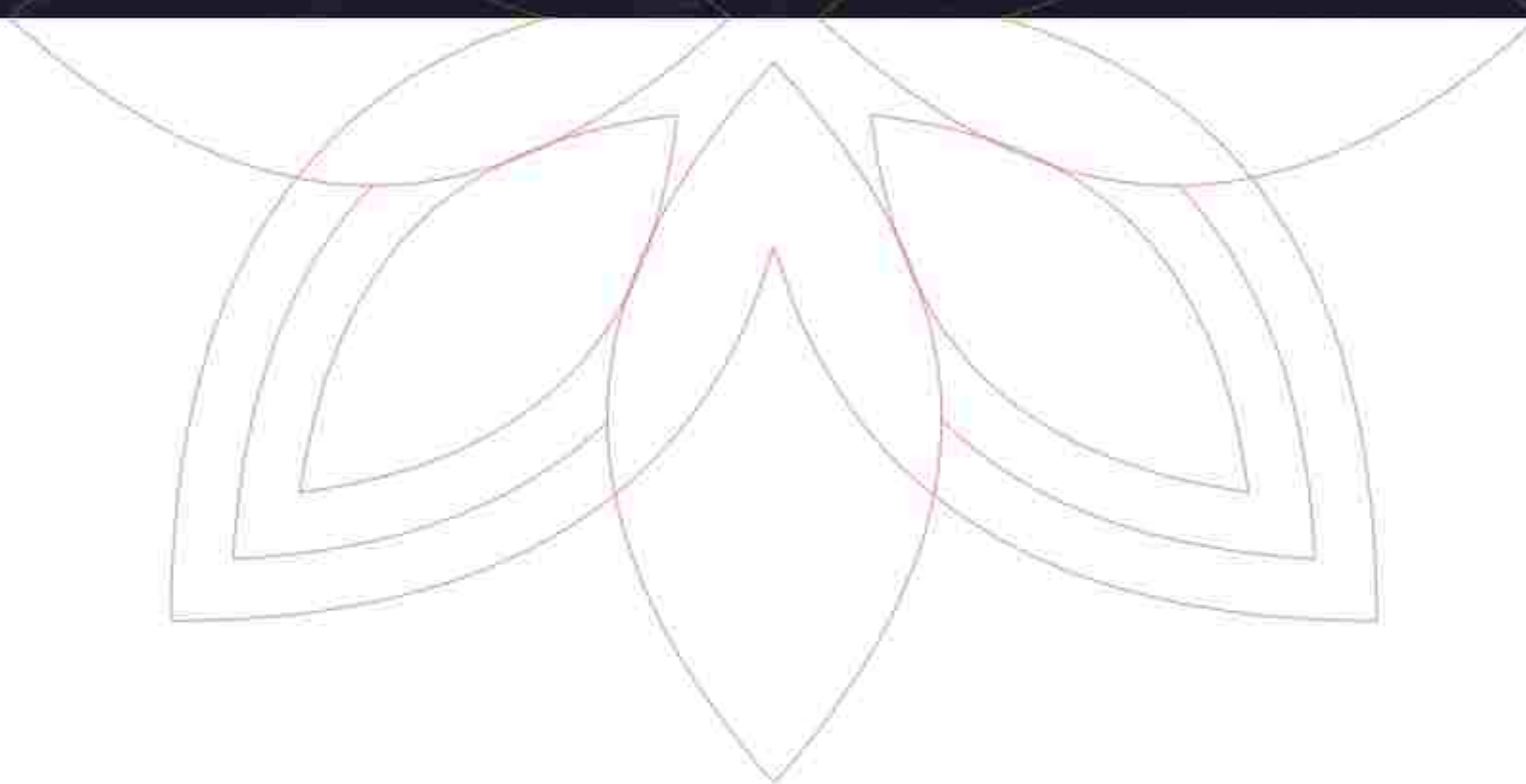




16 luxurious homes within  
a green and private  
community, enjoying  
connectivity to the best of  
South Jakarta and a focus  
on quality of life.



ENTRANCE





17

15

11

09

07

05

03

01

18

16

12

10

08

06

02



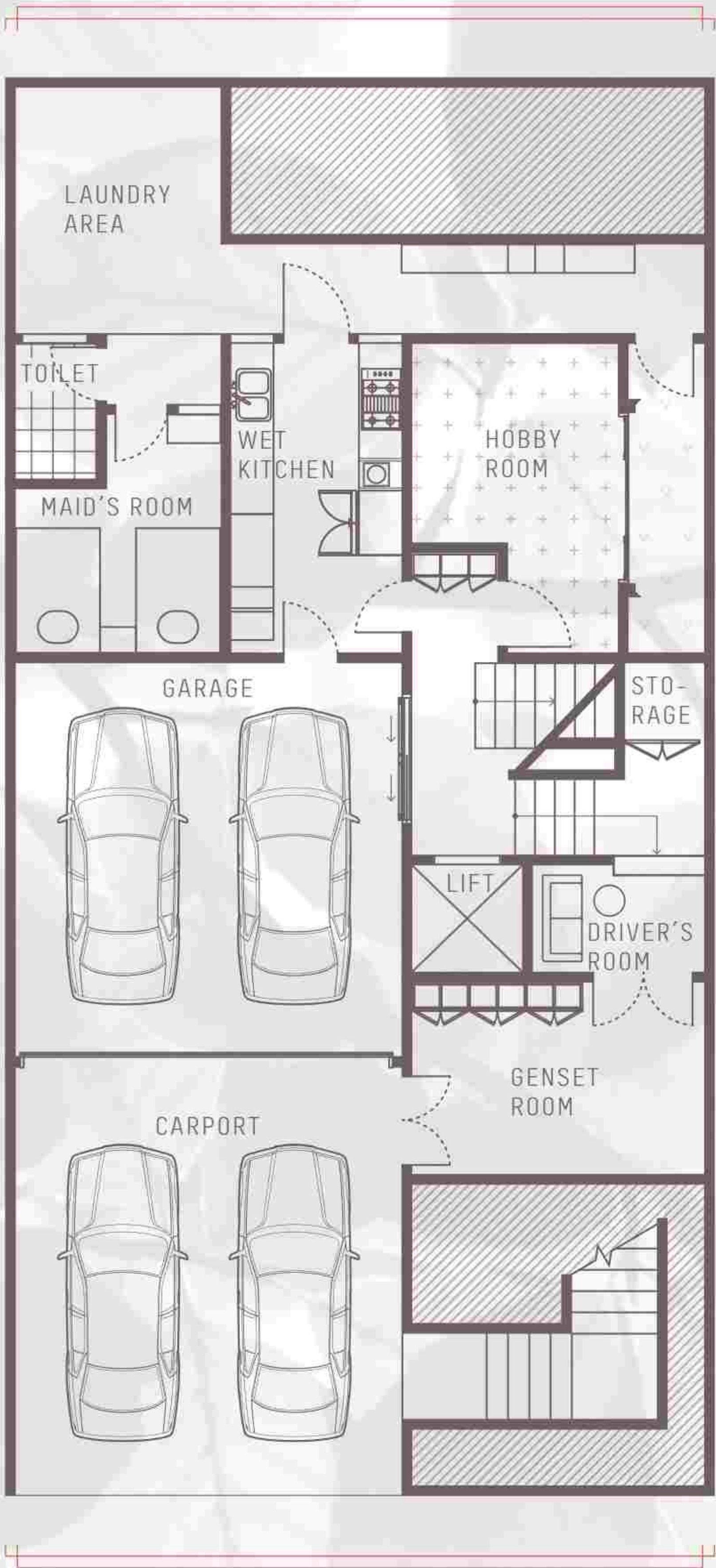
# SPECIFICATIONS

---

- Mini-pile foundations
- Exterior weather shield paint finish
- Powder coat aluminum window frame with clear glass
- Marble floor in common areas
- Marble floor & wall in master bathroom
- Interior emulsion paint finish
- Gypsum with emulsion paint finish for ceilings
- Engineered wood doors
- 16,500W electricity
- AC units in each home

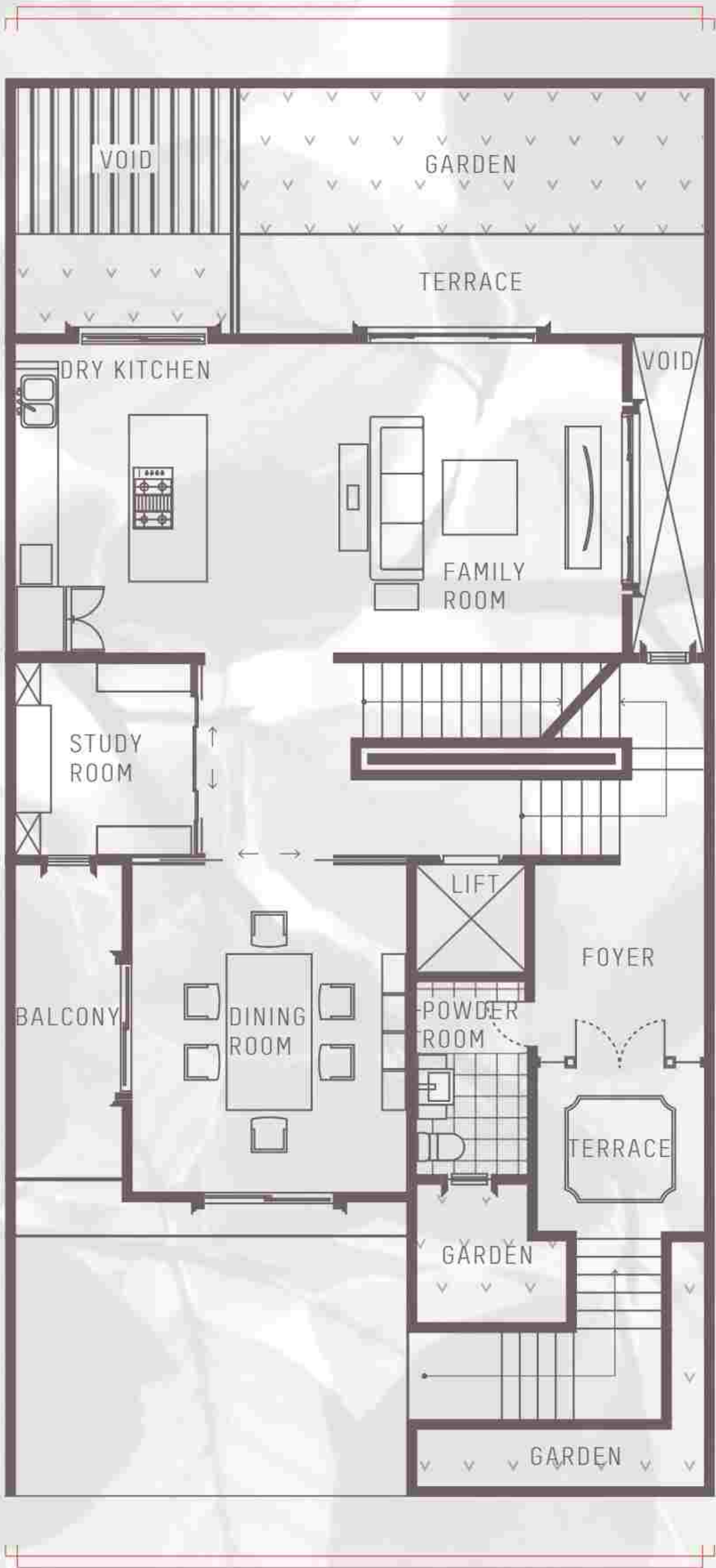


1<sup>ST</sup> FLOOR



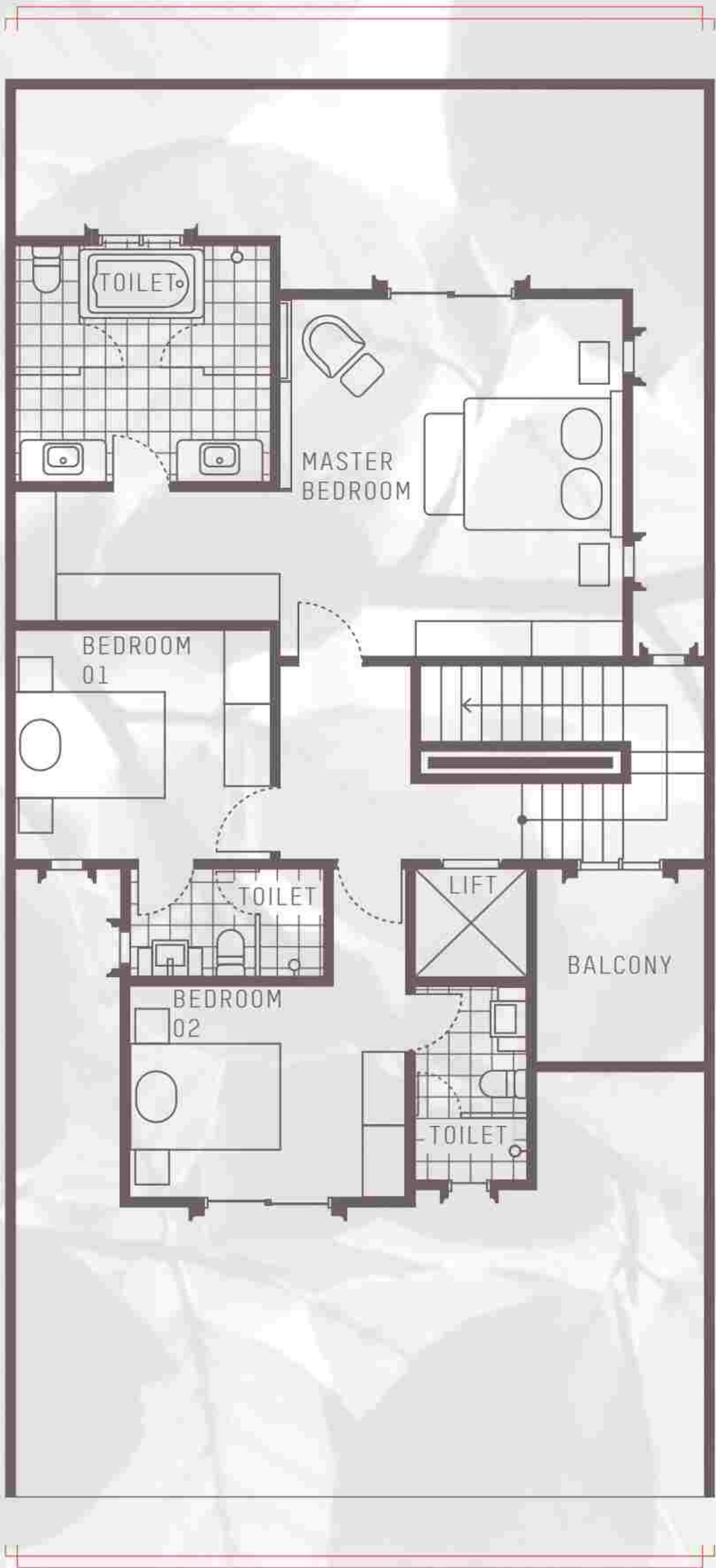


2<sup>ND</sup> FLOOR

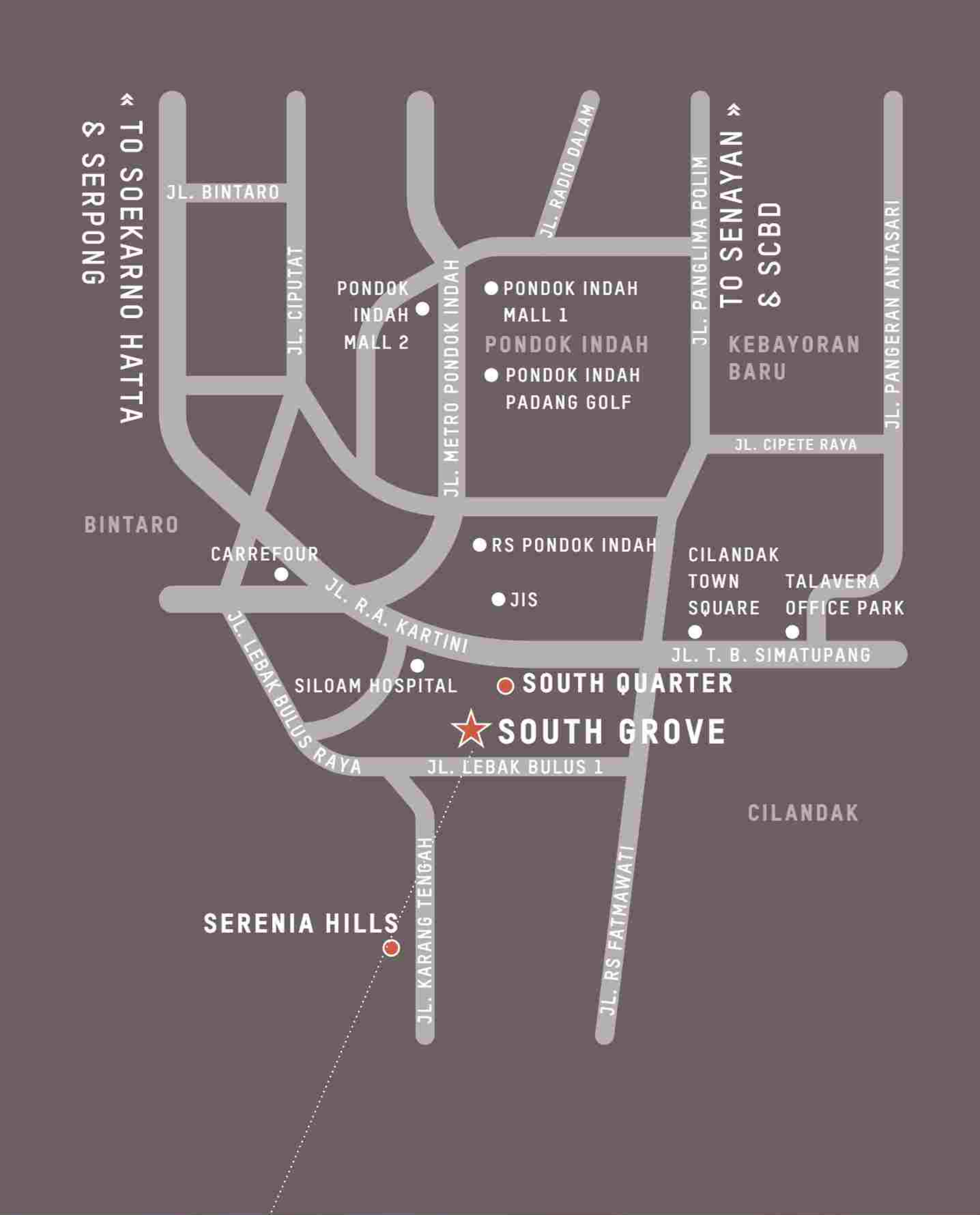




3<sup>RD</sup> FLOOR









---

## SOUTH GROVE MARKETING GALLERY

Jalan Karang Tengah Raya No.9,  
Lebak Bulus, Cilandak  
Jakarta Selatan

---

---

DEVELOPED BY



### DISCLAIMER

The information contained in this brochure is for illustration purposes only and is subject to change. Statements, figures, calculations, plans, images and representations are indicative only. Whilst all reasonable care has been taken in providing this information, the developer and its related companies and their representatives, consultants and agents accept no responsibility for the accuracy of any information contained herein or for any action taken in reliance thereon by any party, whether purchaser, potential purchaser or otherwise. The information contained in this brochure is a guide only and does not constitute an offer, inducement, representation, warranty, or contract.